



# SK MAVEN

**60M ANCHOR HANDLING TUG SUPPLY VESSEL**  
60T BP | 5150 BHP | DP1 | FIFI 1 | 50 MEN | 380 m<sup>2</sup>

## VESSEL PARTICULARS

Class	Supply-HNLS, ⚡A1, ⚡DPS-1, TOW, Offshore Support Vessel, FFV 1, Ⓜ, AH, ⚡AMS, BP (68.5 MT), HDC (7t/m <sup>2</sup> , Main Deck OSR-C2, RW, SPS)
Flag	Malaysia
P.O.R	Port Kelang
Year	2021
Builder	Fujian Southeast Shipbuilding, China
IMO	9720677
Official Number	337749
Call Sign	9M2923

## DIMENSION

L.O.A.	60.00 m
Beam	15.80 m
Depth	6.50 m
Draft (max)	5.20 m
GRT	1960 Tonnes
NRT	588 Tonnes

## CARGO CAPACITIES

Deadweight	1505 Tonnes
Deck Cargo	500 Tonnes
Deck Loading	7 Tonnes/m <sup>2</sup>
Deck Area	380 m <sup>2</sup>
Fresh Water	371 m <sup>3</sup>
Drill/Ballast Water	657 m <sup>3</sup>
Fuel Oil	584.9 m <sup>3</sup>
Mud	359 m <sup>3</sup>
Brine	359 m <sup>3</sup>
Dry Bulk	170 m <sup>3</sup>

## ACCOMMODATION

1 Man Cabin	4x 1 (4)
2 Men Cabin	5x 2 (10)
4 Men Cabin	9x 4 (36)
Total	50 berths
Hospital	1 berth

## PERFORMANCE

Speed	10 knots
Bollard Pull	68.5 Tonnes



## PROPULSION & POWER PLANT

Propellers	2x 1920kW Conventional CPP
Bow Thruster	2x 515kW, 8T Thrust each
Main Engine	2x 1920kW 1800 rpm
Main Generator	2x 350kW, 415V3Ph50Hz
Shaft Generator	2x 800kW, 415V3Ph50Hz
Emerg Generator	1x 122kW, 415V3Ph50Hz

## DECK MACHINERY

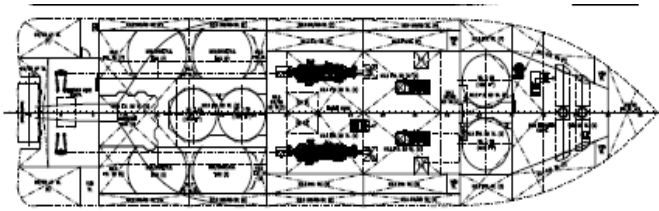
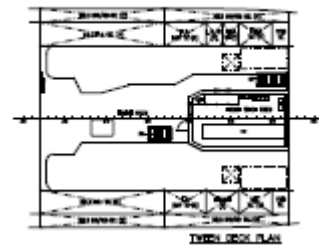
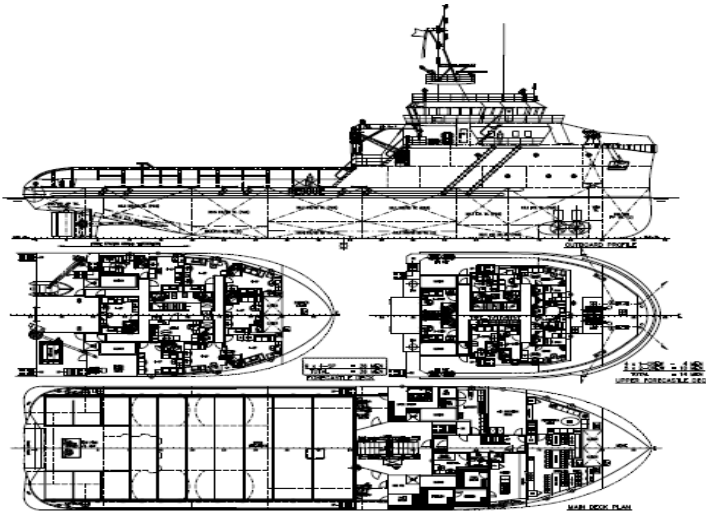
Tugger winch	2x 10 Tonnes SWL
Capstan	2x 5 Tonnes SWL
Provision Crane	1x 3 Tonnes SWL @ 9 m radius
AHT Winch	1x Electro-Hydraulic Double Drum AH/T Winch
	Line pull: 150 Tonnes
	Brake: 200 Tonnes
	Drum cap: 1000m x 56mm dia. Wire
Storage Reel	1x 1000m x 56mm dia. Wire
Karm Fork	1x 200 Tonnes SWL
Towing Pins	1x 200 Tonnes SWL
Stern Roller	1x 5m(L) x 1.6m(dia.) 200Tonnes SWL

## CARGO HANDLING CAPACITY

Fresh Water	1x 125 m <sup>3</sup> /hr @ 75 m head
Drill Water	1x 100 m <sup>3</sup> /hr @ 75 m head
Fuel Oil	1x 150 m <sup>3</sup> /hr @ 75 m head
Mud/Brine	2x 75 m <sup>3</sup> /hr @ 75 m head
Dry Bulk	2x 13.5 m <sup>3</sup> /min @ 5.6 bar



## SK MAVEN | 60M ANCHOR HANDLING TUG SUPPLY VESSEL



THIS DRAWING AND THE INFORMATION CONTAINED HEREIN ARE SUPPLIED ON THE UNDERSTANDING THAT THEY ARE THE EXCLUSIVE PROPERTY OF NC DESIGN PTE LTD. THEY MUST NOT BE USED OR REPRODUCED IN WHOLE OR IN PART WITHOUT PERMISSION IN WRITING.

### NAVIGATION EQUIPMENT

Radars, Magnetic Compass, Gyro Compasses, DGPSs, AIS Autopilot, Echo Sounder, Speed Log, Navtex, Weather Fax SSAS, BNWAS

### COMMUNICATION EQUIPMENT

GMDSS A1+A2+A3, VHF Radios, Auto Telephone, EPIRB Public Address, Batteryless Telephone, SART

### FIRE-FIGHTING EQUIPMENT

**External FiFi** Pump: 2x 1400 m<sup>3</sup>/hr @ 130 MLC  
Monitor: 1x 1200 m<sup>3</sup>/hr (water/foam)  
Monitor: 1x 1200 m<sup>3</sup>/hr (water)  
**Oil Dispersant** 2x 6m spray booms with nozzles

### SAFETY EQUIPMENT

**Rescue Boat** 1x 6 men Fast Rescue Boat  
19.7 kW in board engine

## SKOM SDN BHD (1182610-K)

B03-B-17-1, Menara 3A, No.3, Jalan Bangsar, KL Eco City, 59200 Kuala Lumpur, Malaysia  
Tel : +603-2280 6777 | Fax : +603-2201 7778 | [www.skom.com.my](http://www.skom.com.my)

Disclaimer : All information provided here is accurate at the time of printing and may be subject to change without prior notice. While every reasonable care has been taken in preparing this document. SKOM Sdn Bhd will not be held responsible for any inaccuracies.