



SK MARCO POLO

78M ACCOMMODATION WORK BOAT
50T CRANE | DP 2 | FIFI 1 | 200 MEN | 750 m²

VESSEL PARTICULARS

Class	ABS ∇ A1 \oplus SPS ∇ AMS Offshore Support Vessel FFV 1 ∇ DPS-2 CRC RW
Flag	Malaysia
P.O.R	Port Kelang
Year Built	2014
Builder	Xiamen Shipbuilding Industry, China
IMO	9694074
Official Number	900076
Call Sign	9WNH9

DIMENSION

L.O.A.	78.00 m
Beam	20.00 m
Depth	8.00 m
Draft (max)	6.40 m
GRT	4951 Tonnes
NRT	1485 Tonnes

CARGO CAPACITIES

Deadweight	3633 Tonnes
Deck Cargo	1000 Tonnes
Deck Loading	10 Tonnes/m ²
Deck Area	750 m ²
Fresh Water	1168 m ³
Drill/Ballast Water	2433 m ³
Fuel Oil	1481 m ³

ACCOMMODATION

1 Man Cabin	6x 1 (6)
2 Men Cabin	19x 2 (38)
4 Men Cabin	39x 4 (156)
Total	200 berths
Hospital	2 berths

PERFORMANCE

Speed	10 knots
-------	----------



PROPULSION & POWER PLANT

Propellers	2x 2206KW Azimuth Thrusters
Bow Thruster	2x 785KW, 12T Thrust each
Main Engine	2x 2206KW 800 rpm
Main Generator	2x 715KW, 440V3Ph60Hz
Shaft Generator	2x 1236KW, 440V3Ph60Hz
Emerg Generator	1x 150KW, 440V3Ph60Hz

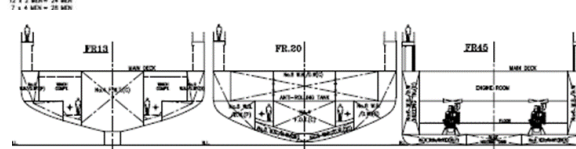
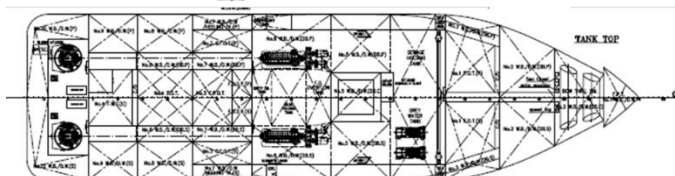
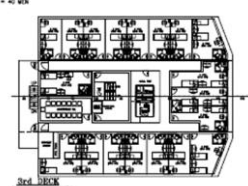
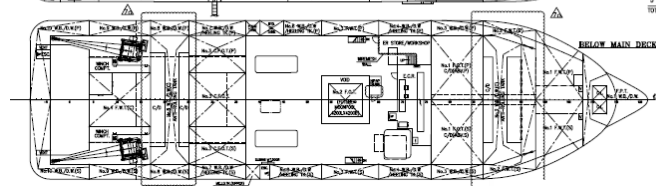
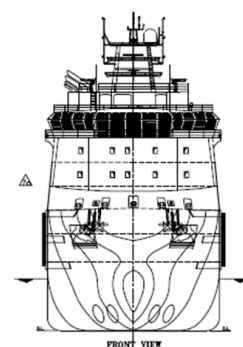
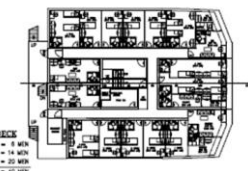
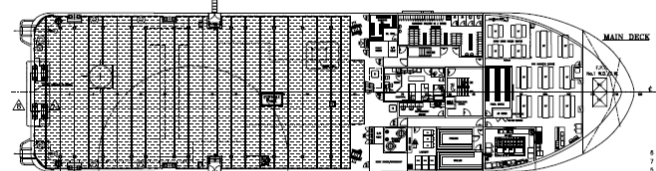
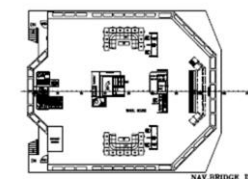
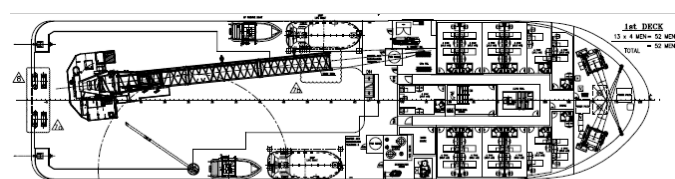
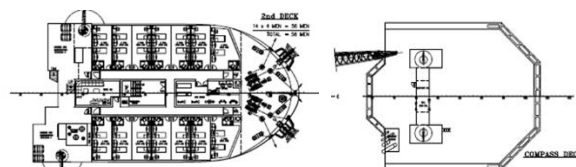
DECK MACHINERY

Tugger winch	2x 10 Tonnes SWL
Capstan	2x 5 Tonnes SWL
Provision Crane	1x 3 Tonnes SWL @ 12 m radius
4 Points Mooring	4x Electro-Hydraulic Mooring Winches Line pull: 50 Tonnes Brake: 120 Tonnes Drum cap: 1500m x 42mm dia. Wire 4x 5 Tonnes Delta Flipper Anchors
Main/Pedestal Crane	1x 50 Tonnes @ 12 m radius Boom Length: 36.6m lattice type API 2C, certified for Personnel Lifting

CARGO HANDLING CAPACITY

Fresh Water	1x 120 m ³ /hr @ 90 m head
Drill Water	1x 120 m ³ /hr @ 90 m head
Fuel Oil	1x 120 m ³ /hr @ 90 m head
Water Maker	2x 40 m ³ /day

A detailed technical line drawing of the outward profile of the ship 'Krasnodar'. The ship is shown from a starboard perspective. It features a large crane on the deck, a complex superstructure with multiple levels of windows, and a funnel at the stern. The hull is marked with various alphanumeric codes. The drawing is a black and white line art representation.



Rescue Boat	2x 6 men Fast Rescue Boat 118 KW in board engine, waterjet
Lifeboat	2x 100 men Life Boats

B03-B-17-1, Menara 3A, No.3, Jalan Bangsar, KL Eco City, 59200 Kuala Lumpur, Malaysia
Tel : +603-2280 6777 | Fax : +603-2201 7778 | www.skom.com.my

Disclaimer : All information provided here is accurate at the time of printing and may be subject to change without prior notice. While every reasonable care has been taken in preparing this document, SKOM Sdn Bhd will not be held responsible for any inaccuracies.